

## Model WC5WA4020U specification

### The high pressure pump: model WIP5

Pump type: dual plunger reciprocal intensifier.

20:1 intensifier ratio

Max pressure: 60,000psi (400Mpa).

Continuously adjustable cutting pressure.

Max water flow rate: 0.8Gal/min (3.2L/min).

High pressure water attenuator to dampen cutting pressure fluctuations.

Reliable electronic shift

Intensifier driven by: hydraulic pump.

Hydraulic pump type: Axial piston hydraulic pump.

Hydraulic filtration in oil path with filter cartridge

50HP high efficiency motor with Wye Delta soft start

Cooling method: air fan cooling with high efficiency heat exchanger.

Use of electric chiller is optional with additional cost.

Water filter: 2 stage filtration included inside the pump unit.

Integrated Control panel with heavy gauge metal framework

CE/CSA/UL certified Electronic components

All stainless fittings and tubing

Power source: 3 phase, 220/380/415/440VAC, 50/60Hz 37kw, 50HP.

Approximate form size: 1600 x900 x1400mm, weight 1100kg.



Protective automatic shut off under the following circumstances:

- Over pressure limit.
- Over temperature limit.

### CNC cutting table: Model CAT4020U

The table consists of water tank, X-Y motion system, Z axis motion, cutting head assembly, and abrasive mini-hopper with adjustable abrasive feeding control.

Style: cantilever, water tank is made of stainless steel.

Effective cutting area: 2000x4000mm.

Maximum Z-axis travel: 6" (150mm)

X-Y axis motion system: ball screw, linear motion guide

X-Y axis motion drive: AC servo motor

Z axis motion: AC motor with speed reducer.

X-Y position accuracy is +/-0.0015"(0.04mm),

X-Y axis position repeatability: +/- 0.0004"(0.01mm).

Best cutting tolerance: +/- 0.006" (0.15mm).

Maximum X-Y axis travel speed: 32ft/min (10m/min).

This machine can cut all kinds of metal, marble, granite, glass, ceramic tile, rubber, plastic, virtually any materials.



**Mini hopper for abrasive feeding:**

Large size to enable long working time without floor size abrasive hopper.  
Clear window view for easy monitoring.  
Abrasive valve attachment for easy abrasive on/off control and abrasive flow rate adjustment.

**Cutting head assembly:**

The assembly consists of pneumatically operated on/off valve and self-aligned cutting head. Maximum Abrasive flow rate: 0.5kg/min (1pound/min). Compressed air source is necessary. An air compressor is optional item from manufacturer. As an option, the cutting head can manually tilt in both x and y directions.

**UHP tubing and plumbing kit for connection:**

1/4" or 7mm OD UHP tubing from intensifier to cutting head mounted on cutting table  
Stainless fittings. Rack kit to supporting installation of the tubing.

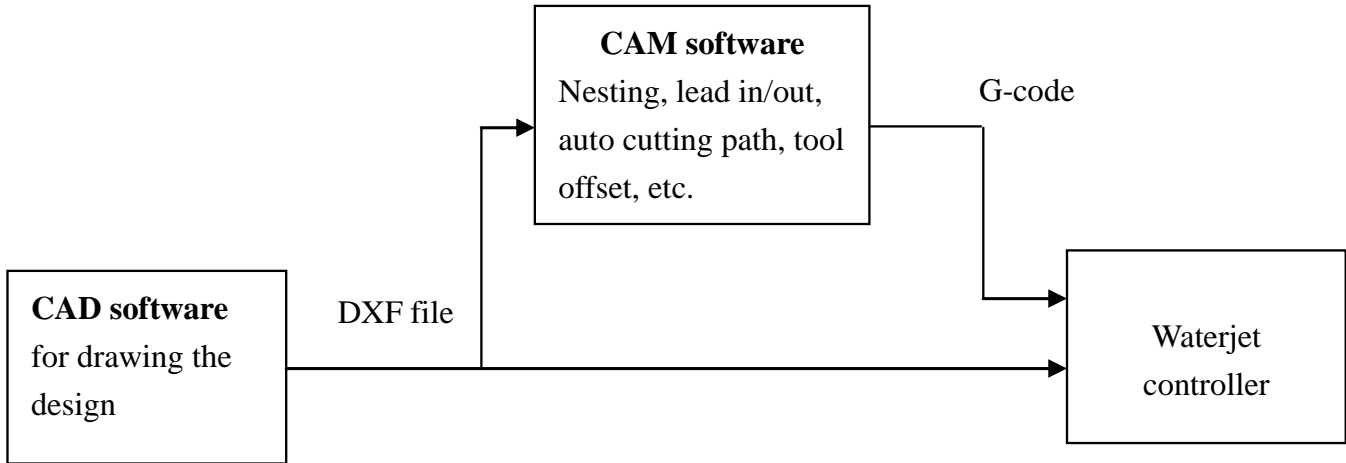
**CNC controller:**

CNC controller consists of advanced industrial grade computer and specialized software running on the Microsoft windows platform. The controller is capable of simultaneous X-Y axis interpolation movement. Fast accelerate or decelerate motion and high speed travel from point to point. Simulation without motion or dry run with axis motion but no jetting of water/abrasive are features included. Error stop and trace repeat are also very useful features. Out of range warning and hard stop to prevent damage capability are embedded in the system. Emergency shut off switch is provided. Remote control is provided to control the motion of X-Y-Z axis when operator is away from the controller tower.

**DXF file compatibility:**

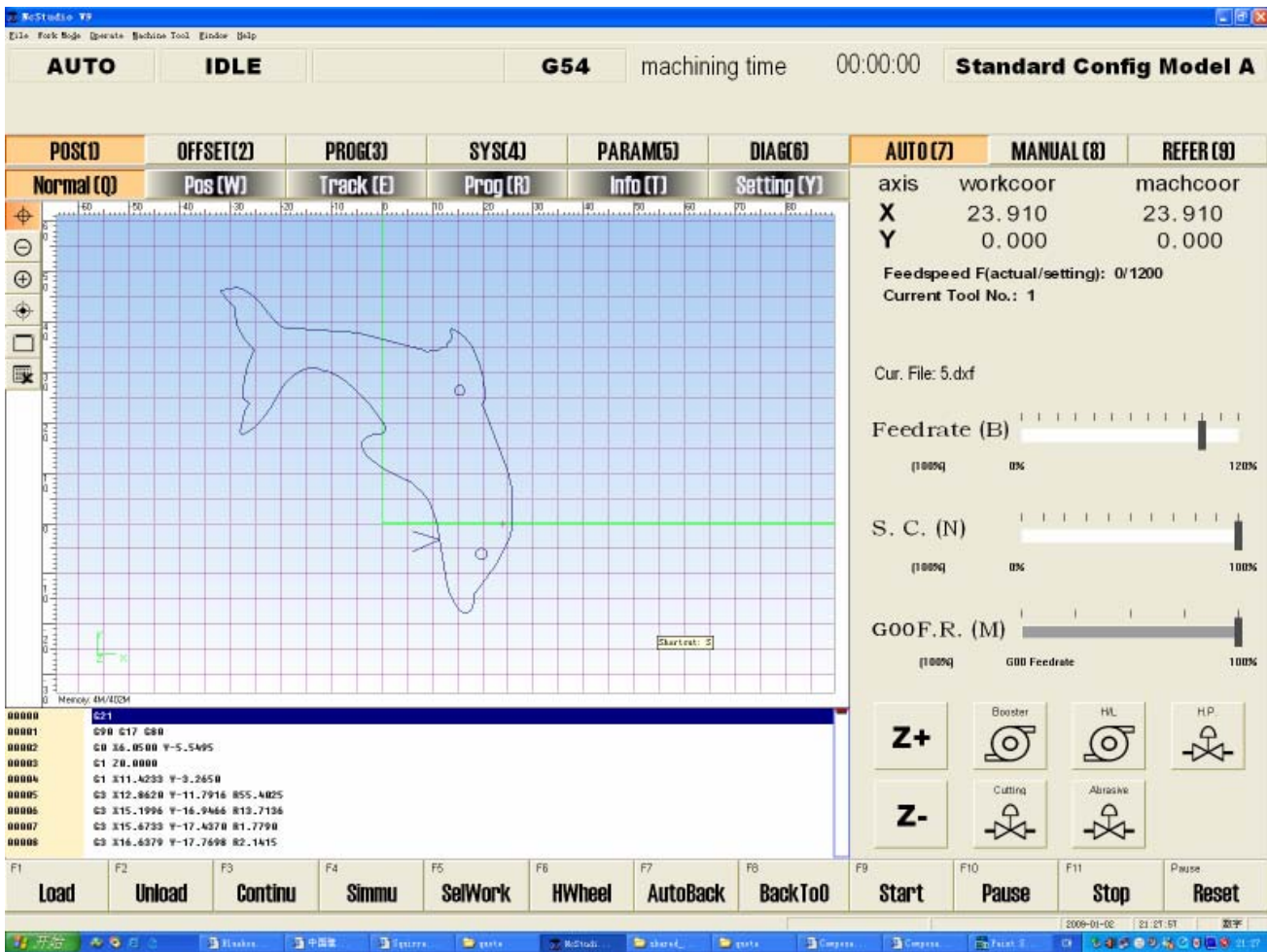
The controller is compatible to dxf file format. Users can save design drawing in .dxf from AutoCAD and read the file into the controller. Controller will post the dxf file to G-code. The controller can also read G-code generated from other CAM software. Controller software interface is based on Microsoft Windows XP/WIN7.

Advanced CAD/CAM software (optional): for design drawing, automatically generating machine path, lead in/out, nesting, tool offset, and generate G code. Features are similar to AutoCAD, and with rich features of CAM.



CNC Programming flow chart

**Controller screen:**



**Automatic abrasive feeder (optional):**

This equipment is highly recommended for large tables, such as 2000x4000mm

- Requires 70psi pneumatic source
- Capacity 40 Gallon.
- Self detecting empty/full status of reservoir and start/stop feeding.
- Model number ADS-04-170.

**Accessories included in standard package:**

High pressure tubing, Water hose, Electrical cables, 1 pcs nozzle, 2 pcs orifice, 1 tube of blue goop.  
1 set of special tools for pump maintenance.

**Spare parts kit (optional).**